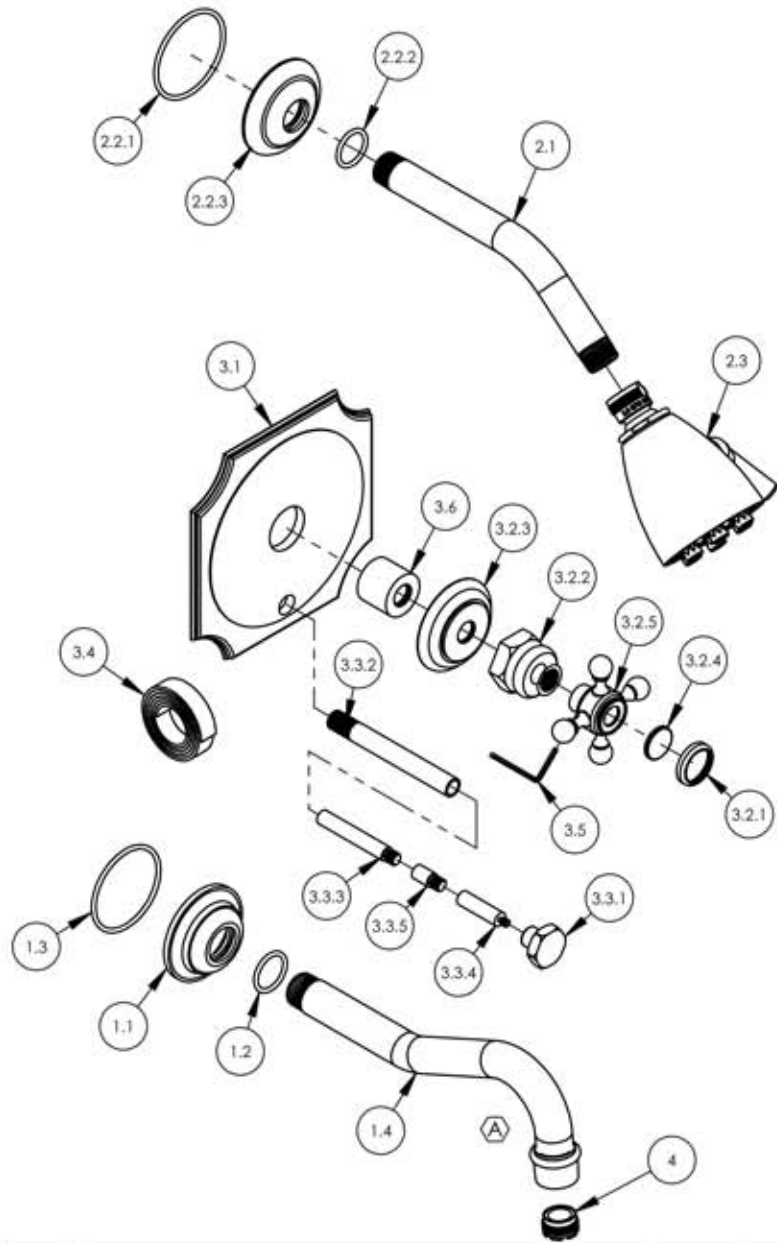


A

B

C

D



ITEM NO.	PART NO.	DESCRIPTION	QTY.
1	3-390/00	WALL SPOUT, HENRI SERIES	1
1.1	11158/00	FLANGE, WALL TUB	1
1.2	90118	O-RING, 7/8"ID X 1-1/16"OD X 3/32"THK., AS-568-118	1
1.3	90137	O-RING, 2-1/16"ID X 3/32"THK., AS-568-137	1
1.4	2-108/00	SUB. ASSY. WALL SPOUT	1
2	4-140/00	SHOWER HEAD 8" ARM, 6 JET PLUNGER, HEX TRADITIONAL	1
2.1	P16008/00	SHOWER ARM (8 INCH)	1
2.2	810/00	SHOWER FLANGE, TRADITIONAL	1
2.2.1	90138	O-RING, 2 1/8"ID X 3/32"THK., AS-568-138	1
2.2.2	90117	O-RING, 7/8"ID X 33/32"THK., AS-568-117	1
2.2.3	P16011/00	K803 SHOWER FLANGE	1
2.3	P16014/00	SHOWERHEAD SIX JET	1
3	4-165/00	PRESSURE BALANCE WITH DIVERter, SCALLOPED PLATE, CROSS HANDLE	1
3.1	10516/00	TRIM PLATE DIVERTED, FRENCH TRAD. PB/THERMO	1
3.2	3-1428/00	CROSS HANDLE, WALL/SHOWER, 500 SERIES	1
3.2.1	10538/00	CAP RING FOR 500 SERIES BUTTON	1
3.2.2	10621/00	BASE HUB NUT	1
3.2.3	10618/00	ESCUTCHEON, TRADITIONAL 500	1
3.2.4	11097	PLASTIC BUTTON, BLANK	1
3.2.5	2-180/00	SUB ASSY. CROSS HANDLE HUB	1
3.3	3-322/00	EXTENSION ASSY. FOR PB TUB & SHOWER SET, HEX MODERN & TRADITIONAL SERIES	1
3.3.1	10920/00	POP-UP KNOB, HEX TRADITIONAL	1
3.3.2	11009/00	EXTENSION SLEEVE FOR STEM, PB TUB & SHOWER SET	1
3.3.3	11007/00	EXTENSION PIN FOR PB TUB & SHOWER SET 1.25LONGER	1
3.3.4	11008/00	DIVERTED STEM FOR PB PLATE	1
3.3.5	11085	EXTENSION PIN FOR PB TUB & SHOWER SET	1
3.4	90537	1/16" TAPE FOR WALL PLATE	1
3.5	92184	HEX L-KEY 3/32" HEX x 2 1/8" L	1
3.6	10986	CENTERING PLATE SLEEVE	1
4	P05024	AERATOR CACHE COIN SLOT, M21.5X1.0 FULL FLOW	1

E

D4	A	UPDATED COMPONENTS	7/25/2018	RAH
ZONE	REV.	DESCRIPTION	DATE	APPROVED
REVISIONS				

1261 LOGAN AVENUE
COSTA MESA, CALIFORNIA 92626
PHONE: 714.361.4800
FAX: 714.617.3120

PHYLIRICH®

Defining Luxury Since 1959

PROPRIETARY AND CONFIDENTIAL
THE INFORMATION CONTAINED IN THIS DRAWING IS THE SOLE PROPERTY OF RSS MANUFACTURING. ANY REPRODUCTION IN PART OR AS A WHOLE WITHOUT THE WRITTEN PERMISSION OF RSS MANUFACTURING IS PROHIBITED.

-	-	INTERPRET GEOMETRIC DIMENSIONING & TOLERANCING IN ACCORDANCE WITH ASME Y14.5-2009 & ASME Y14.41-2003 STANDARDS, UNLESS OTHERWISE SPECIFIED. DIMENSIONS ARE IN INCHES. TOLERANCES ARE:		
NEXT ASSY	USED ON	FRACTIONS ±1/64"	DECIMALS X.X: ±.1 X.XX: ±.01 X.XXX: ±.005	ANGULAR ±.5°
APPLICATION		MATERIAL	NAME	DATE
FINISH		DRAWN	10/29/2015	
DO NOT SCALE DRAWING		CHECKED	GRE	

PRESSURE BALANCE TUB & SHOWER KIT, CROSS HANDLES, HENRI SERIES

SIZE	ASM/PRT NO.	REV
A	161-29/00	A
SCALE: 1:4.5	WEIGHT: lbs.	SHEET 1 OF 2

5

4

3

2

1